

# Actuators with terminal connection. The direct route is simply the fastest.



> We set standards.  
[www.belimo.eu](http://www.belimo.eu)

## Increased flexibility, less effort, same price.

Belimo standard damper actuators are now also available with a terminal connection. They can be connected directly in the control cabinet. What this means in practice is quicker connection with the cable of your choice and the otherwise unavoidable connection socket becomes superfluous.

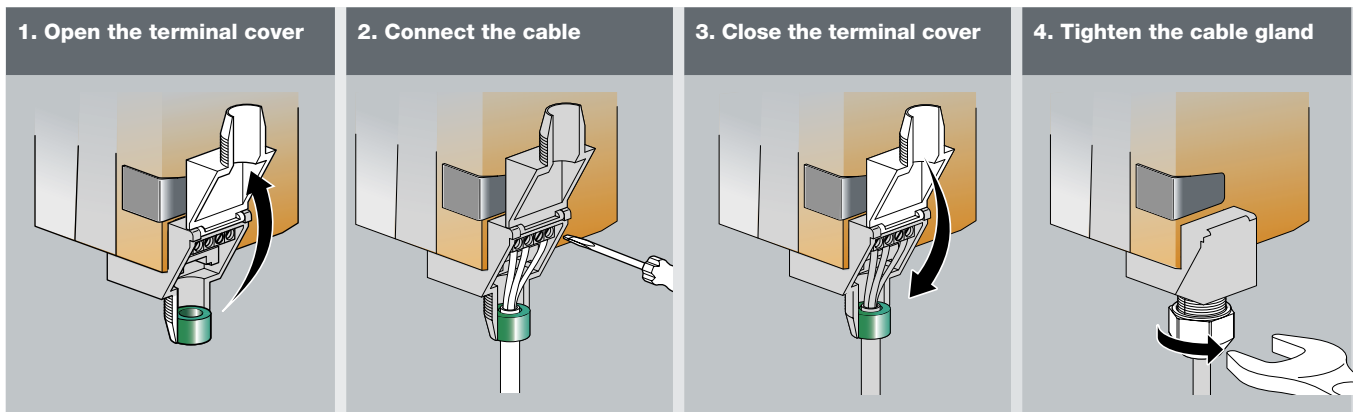
### **Free connectability for any cable**

Belimo damper actuators are supplied as standard with a connecting cable that is routed to the system via a connection socket. The exact opposite applies to terminal connections: the cables already in the control cabinet are laid to the actuators and connected to them in a few simple steps. The terminal connection lets you choose whichever cable you like. Various seal inserts with different diameters guarantee compliance with the IP54 degree of protection at all times.

### **Faster than ever**

The actuator types with a special IP54 terminal connection can be supplied in four rating classes of 5, 10, 20 and 40 Nm. They cost the same as the standard types with a 1 m connecting cable. And since the terminal connections are less complicated to install and the connection socket is no longer needed, wiring has never been cheaper or more convenient.

# Actuators with terminal connection. Connected in an instant.



## Product range / technical data

	Nominal voltage	Torque	Angle of rotation	Control	Running time	Degree of protection	Integrated auxiliary switch
LM/NM/SM/GM24A-TP	24 V	5/10/20/40 Nm	95°	Open-close	150 s	IP54	
LM/NM/SM/GM230A-TP	230 V	5/10/20/40 Nm	95°	Open-close	150 s	IP54	
LM/NM/SM24A-S-TP	24 V	5/10/20 Nm	95°	Open-close	150 s	IP54	•
LM/NM/SM230A-S-TP	230 V	5/10/20 Nm	95°	Open-close	150 s	IP54	•
LM/NM/SM/GM24A-SR-TP	24 V	5/10/20/40 Nm	95°	Modulating	150 s	IP54	
LM/NM/SM230A-SR-TP	230 V	5/10/20 Nm	95°	Modulating	150 s	IP54	

Belimo worldwide: [www.belimo.com](http://www.belimo.com)



5 year warranty



On site around the globe



Complete range



Tested quality



Short delivery times



Comprehensive support

Headquarters: **BELIMO Automation AG**, Brunnenbachstrasse 1, CH-8340 Hinwil  
Tel. +41 (0)43 843 61 11, Fax +41 (0)43 842 62 68, [info@belimo.ch](mailto:info@belimo.ch)

**BELIMO**<sup>®</sup>